

IS 3360 40m

COM1 - concealed, rd. black
EAN 4007841 068554
Article number 068554



infrared sensor
360°



max. 20 m

2000 W

max. 2000 W



IP20



2 - 1000 lux



5 sec - 15 min



manual override



ideal 2,5 - 4 m

Teach

Teach mode



energy saving

Function description

Higher, further, faster. Infrared presence detector IS 3360 for indoors and out, ideal for watching over high spaces and large areas, such as multi-storey and underground car parks, installation height up to 4 m, 360° angle of coverage, reach 20 m max. (tangential), heavy-duty relay for high switching capacity. Available either in round or square surface-mounted and concealed version.

Technical specifications

| | |
|-------------------------|--|
| Dimensions (Ø x H) | 124 x 78 mm |
| With motion detector | Yes |
| Manufacturer's Warranty | 5 years |
| Settings via | Remote control, Potentiometers, Smart Remote |
| With remote control | No |
| Version | COM1 - concealed, rd. black |
| PU1, EAN | 4007841068554 |
| Type | Motion and Presence Detector |
| Application, place | Indoors |
| Application, room | production facilities, recreation room, changing room, function room / ancillary room, sports hall, reception / lobby, stairwell, WC / washroom, multi-storey / underground car park, warehouse, Indoors |
| Colour | black |
| Colour, RAL | 9005 |

| | |
|---|--------------------------------|
| LED lamps > 8 W | 600 W |
| Capacitive load in µF | 176 µF |
| Technology, sensors | passive infrared, Light sensor |
| Mounting height | 2,50 – 4,00 m |
| Mounting height max. | 4,00 m |
| Optimum mounting height | 2,8 m |
| Detection angle | 360 ° |
| Angle of aperture | 180 ° |
| Sneak-by guard | Yes |
| Capability of masking out individual segments | Yes |
| Electronic scalability | No |
| Mechanical scalability | No |
| Reach, radial | Ø 8 m (50 m²) |
| Reach, tangential | Ø 40 m (1257 m²) |
| Reach, presence | Ø 3 m (7 m²) |
| Switching zones | 1416 switching zones |

IS 3360 40m

COM1 - concealed, rd. black
 EAN 4007841 068554
 Article number 068554



Technical specifications

| | |
|--|---------------------------|
| Includes corner wall mount | No |
| Installation site | ceiling |
| Installation | Concealed wiring, Ceiling |
| IP-rating | IP20 |
| Ambient temperature | from -20 up to 50 °C |
| Material | Plastic |
| Mains power supply | 220 – 240 V / 50 – 60 Hz |
| Switching output 1, resistive | 2000 W |
| Switching output 1, number of LEDs / fluorescent lamps | 8 pcs. |
| Fluorescent lamps, electronic ballast | 1500 W |
| Fluorescent lamps, uncorrected | 1000 VA |
| Fluorescent lamps, series-corrected | 400 VA |
| Fluorescent lamps, parallel-corrected | 400 VA |
| Switching output 1, low-voltage halogen lamps | 2000 VA |
| LED lamps < 2 W | 100 W |
| LED lamps > 2 W < 8 W | 300 W |

| | |
|----------------------------|--|
| Functions | Normal / test mode, Manual ON / ON-OFF |
| Twilight setting | 2 – 1000 lx |
| Time setting | 5 s – 15 Min. |
| Basic light level function | No |
| Main light adjustable | No |
| Twilight setting TEACH | Yes |
| Constant-lighting control | No |
| Interconnection | Yes |
| Type of interconnection | Master/master |
| Interconnection via | Cable |
| Interconnection, number | max. 10 sensors |
| Product category | Presence detector |

Accessories

| | |
|--------------------|-----------------------------|
| EAN 4007841 559410 | Service remote control RC8 |
| EAN 4007841 009151 | Remote control Smart Remote |

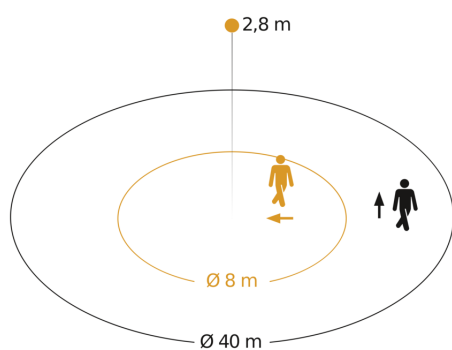
IS 3360 40m

COM1 - concealed, rd. black

EAN 4007841 068554

Article number 068554

Detection Zone

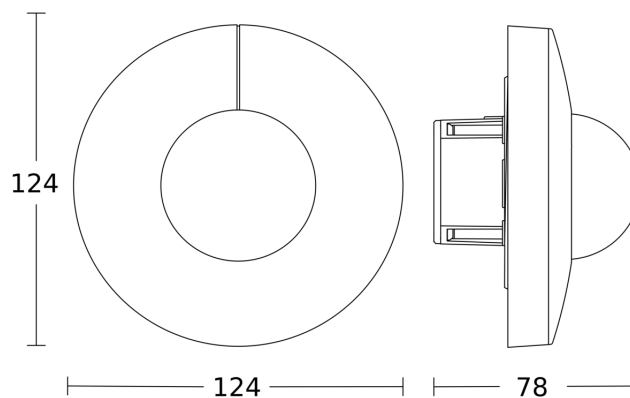


Possible mounting height: 2,50 m – 4,00 m

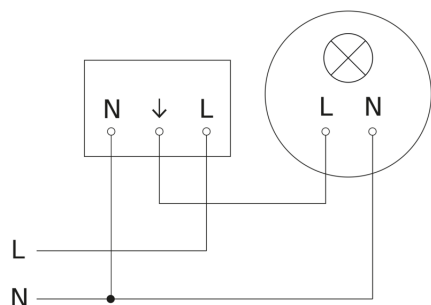
Orange: radial

Black: tangential

Dimension Drawing



Circuit diagram

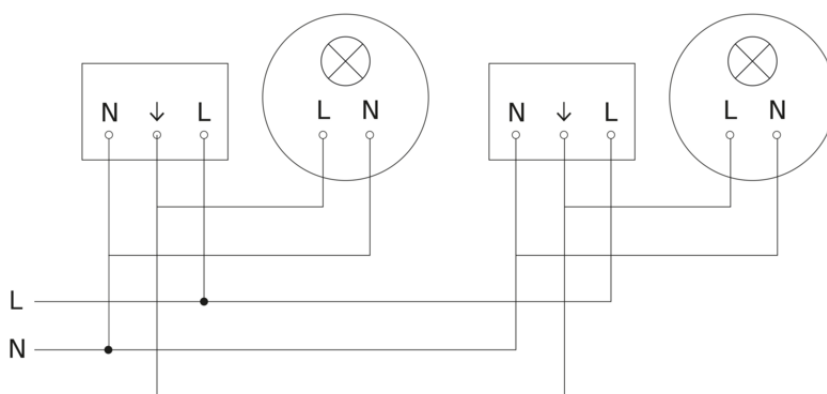


IS 3360 40m

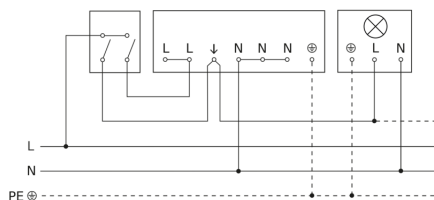
COM1 - concealed, rd. black
EAN 4007841 068554
Article number 068554



Circuit diagram for interconnecting several sensors



Connection using two-circuit switch for manual and automatic operation



Circuit diagram Connection via a changeover switch for continuous and automatic operation

